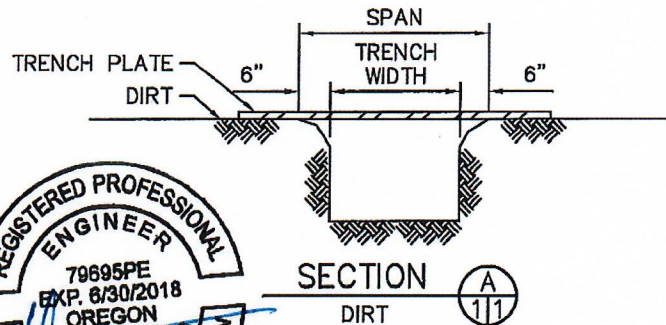
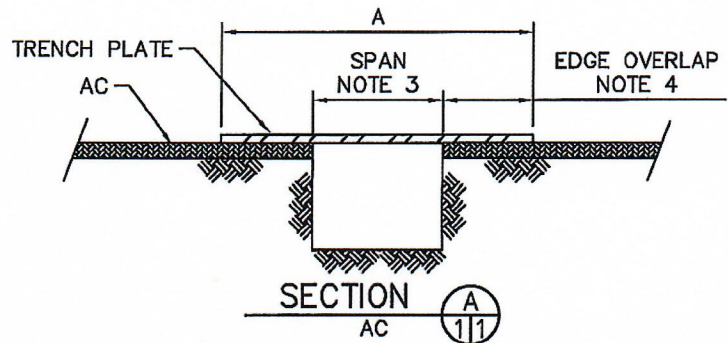
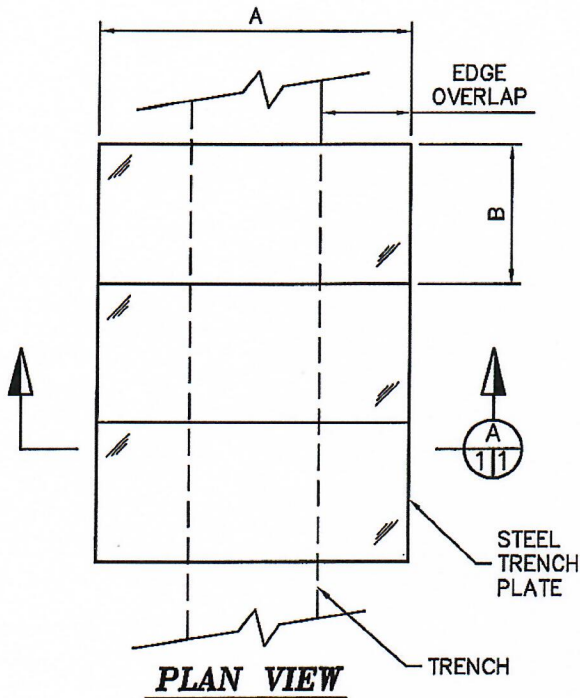


# FALCON SHORING COMPANY

## MANUFACTURERS TABULATED DATA SHEET

### STEEL TRAFFIC PLATES

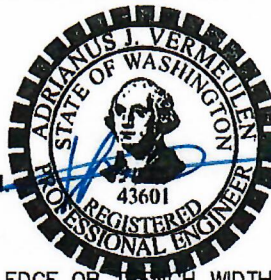


### HS-20-44 LOADING

PLATE THICKNESS (IN)	MAX. ALLOW. SPAN (FT)	PLATE SIZE (FT x FT) / WEIGHT (LB)									
		4' x 6'	4' x 8'	5' x 8'	5' x 10'	6' x 10'	6' x 12'	8' x 10'	8' x 12'	8' x 16'	8' x 20'
1"	4'-6"	-	1306 #	1632 #	2042 #	2448 #	-	3264 #	3917 #	5222 #	6528 #
1-1/2"	10'	-	-	-	3062 #	-	-	-	5876 #	7834 #	9792 #

### NOTES:

- PLATES ARE ASTM A36 MIN. STEEL,  $F_y = 36$  KSI.
- PLATES ARE DESIGNED FOR HS-20-44 LOADING.
- THE SPAN IS FROM ASPHALT EDGE TO ASPHALT EDGE OR TRENCH WIDTH + 12".
- EDGE OVERLAP SHALL BE AS FOLLOWS:
  - TRAFFIC SPEED LESS THAN 45 MPH; 12" MINIMUM.
  - TRAFFIC SPEED OVER 45 MPH; 24" MINIMUM.
- CHART IS BASED ON STABLE TRENCH. STABILITY TO BE DETERMINED BY COMPETENT PERSON OR ENGINEER.
- IF SPEED EXCEEDS 45 mph, PLATE MAY REQUIRE ANCHORAGE.
- IF SPEEDS ARE LOWER THAN 10 mph SPANS MAY BE INCREASED BY 20%.



TITLE:

**STEEL TRAFFIC PLATES**



9995 SW AVERY STREET, STE 210  
TUALATIN, OR 97062  
PH: (503) 485-0820

**J.M. TURNER ENGINEERING, INC.**  
**CONSULTING ENGINEERS**



1325 COLLEGE AVE., SANTA ROSA, CA 95404  
(707) 528-4503 FAX (707) 528-4505

DATE:  
07/11/17

REVISED:

FILE NO:  
15650-2